

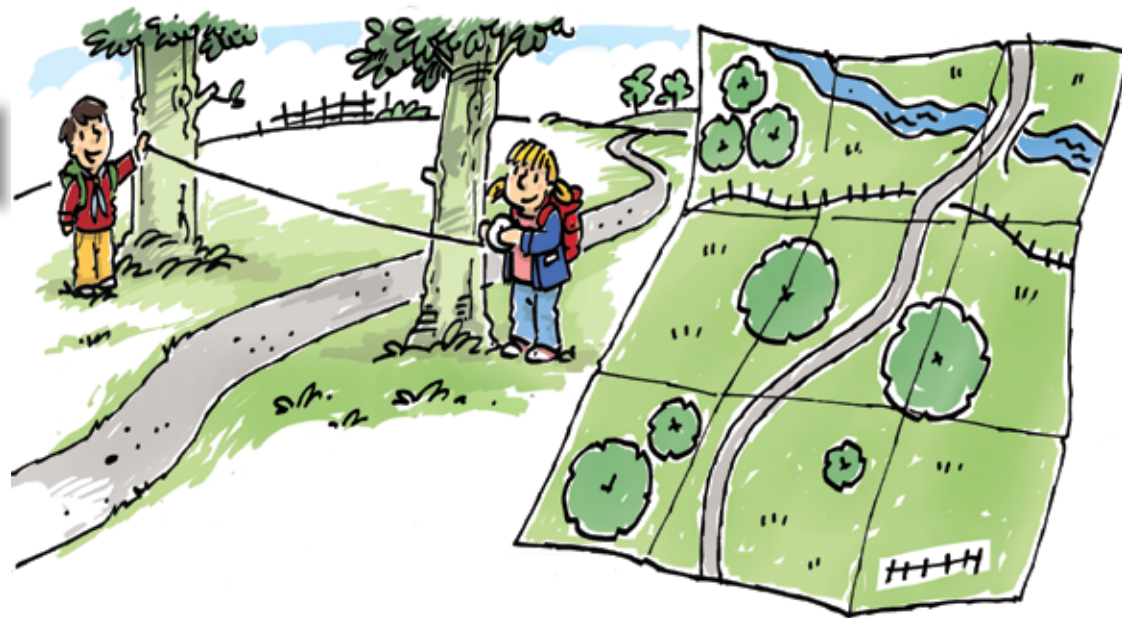
What's the big idea

Forest Life



The idea of the map making adventure is to introduce the concept of maps to Beaver Scouts. Map Making allows the Beaver Scouts to explore their local area or park and discover how a map is made and used to find new and secret locations.

In the overall 'Tribe' theme of Beaver Scouts it connects to the notion of 'warriors' seeking out new lands and mapping the land of the 'Tribe'



Map Making



Ideas on what to do

Plan

Show the Lodge a map and how to read it. See can they find different things in it. Chat to them about why they would use maps and the different features like scale and legends

Do

Do a simple mapping exercise of the area around the Scout Den. Give the Beaver Scouts different jobs to do like drawing in the map, discoverers to find different things around the Scout Den and others to work out distance. Keep the scale simple so use paces as the measurement.

Review

After the activity look at the map and try to show the different things on the map that the Beaver Scouts did, use your memory bag to help. Try to show things like certain features that individual Beaver Scouts found etc.

Comments

Swap maps with other Lodges to see if they can follow your map (maybe leave a treasure somewhere)

Resources

- Paper
- Pencils and colouring pencils
- Note pads for each Beaver Scout to make notes
- A rope to help with measuring