	Gasóga na hÉireann / Scouting Ireland			
	No.	Issued	Amended	Next Review Date
	BOD-MA-001	November 2020	n/a	November 2021
	Category: Membership			
Membership Policy of Gasóga na hÉireann / Scouting Ireland				

Gasóga na hÉireann / Scouting Ireland Membership Policy

Contents

Definitions.....	2
Purpose.....	2
Gasóga na hÉireann / Scouting Ireland Types of Member.....	2
Categories of Members.....	3
Probation for Adult Members.....	4
Application for Membership	5
Continuing Membership.....	6
Ending Membership.....	8

Definitions

Throughout this document, the term “Member” refers to an individual person and not to a Scout Group which is a member of the company (Gasóga na hÉireann / Scouting Ireland Services clg) for constitutional and governance purposes. “Members” is the plural of “Member”.

" Being a volunteer is a privilege. It is not a right".

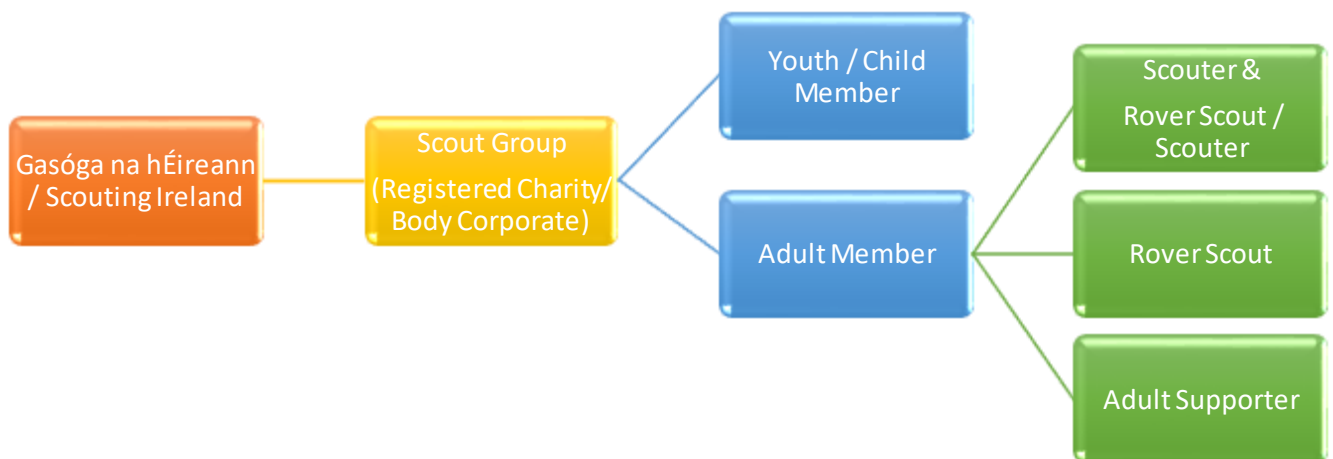
Purpose

The purpose of this policy is to define how a person becomes a member of a Gasóga na hÉireann / Scouting Ireland Scout Group and continues in membership of that Scout Group.

Gasóga na hÉireann / Scouting Ireland Types of Member

The Scout Group shall have the following types of members:

1. Youth / Child Member
2. Adult Member



All members of Gasóga na hÉireann / Scouting Ireland must be a member of a Scout Group. All adult members must be vetted by the appropriate Statutory Authorities in accordance with the relevant legislative requirements and have completed the training requirements associated with that category of membership as defined by Gasóga na hÉireann / Scouting Ireland.

A Rover Scout, who is also a Scouter, will be known as a Rover Scout / Scouter, thereby indicating a dual role.

It is the responsibility for the Group Leader to ensure that any adult who is a member of their Group is vetted and trained in accordance with the relevant legislative requirements and Gasóga na hÉireann / Scouting Ireland's policies and procedures and adheres to the policies and procedures of Gasóga na hÉireann / Scouting Ireland.

Categories of Members

Type	Category	Requirements for Membership
Youth / Child	Youth / Child Member	<ul style="list-style-type: none"> A Youth / Child Member is a registered uniformed member who takes part in the Youth / Child Programme of Gasóga na hÉireann / Scouting Ireland and has not reached 18 years of age. All Youth / Child Members make the commitment to uphold the Scout Promise.
Adult	Rover Scout	<ul style="list-style-type: none"> A Rover Scout is aged between 18 and 25 years plus 364 days. A Rover Scout is a uniformed adult member who takes part in the Youth Programme of Gasóga na hÉireann / Scouting Ireland. The Rover Scout (dependant on their role at group/county/ provincial and national events) will take responsibility for the care and supervision of Youth / Child Members in Gasóga na hÉireann / Scouting Ireland. All Rover Scouts undergo Garda / Access NI Vetting as per Gasóga na hÉireann / Scouting Ireland policy and procedures. All Rover Scouts make the commitment to uphold the Scout Promise.
Adult	Scouter & Rover Scout / Scouter	<ul style="list-style-type: none"> Scouter & Rover Scout / Scouter is a registered uniformed adult member who supports the delivery of the Youth / Child Programme of Gasóga na hÉireann / Scouting Ireland and takes responsibility for the care and supervision of Youth / Child Members in their Group and works with other adults as part of a team of Scouters in their section. Scouter & Rover Scout / Scouter undergo Garda / Access NI Vetting as per Gasóga na hÉireann / Scouting Ireland policy and procedures. Scouter & Rover Scout / Scouter make the commitment to uphold the Scout Promise. All adults (over the age of 18) accept and understand that their primary membership is as a Scouter, and subsequently all appointments are made by the Group Leader.
Adult	Adult Supporter	<ul style="list-style-type: none"> An Adult Supporter is an adult who wishes to be involved with the work of the Scout Group, for example as a Treasurer, Secretary, Quartermaster / Bo'sun or Chairperson. An Adult Supporter holds an Appointment within the Scout Group and doesn't wear a Scout uniform. Support and advise Youth Members when they are bringing issues to the Group Council / Assembly Meet with the Patrol Leaders Council and Venture Scout Executive on a regular basis. They will provide advice and guidance to Young People (including by means of electronic interactive communications).

Probation for Adult Members

All Adult Members must complete a probationary period of 6 contiguous months active Scouting, after completing the relevant training and associated vetting requirements for that membership category.

The probation process as set down by Gasóga na hÉireann / Scouting Ireland will be managed by the Group Leader (or equivalent) and include reviews using Scouting Ireland's Mutual Agreement & Review Policy at 2 and 4 months.

The period can be extended up to 12 months should the Group Leader (or equivalent) deem it necessary. It cannot not be extended after 12 months except in exceptional circumstances.

Adult members are precluded from accessing CCD-01 within the first 6 months of probation, however access to CCD-01 will be permitted once 6 months initial probation is complete.

Application for Membership

Type	Category	Requirements for Membership
Youth / Child	Youth / Child Member	<ul style="list-style-type: none"> • A Youth / Child Member is aged between 6 and 17 years plus 364 days old and presents themselves to their local Scout Group for membership. • The Scout Group grants membership in accordance with its own membership policy & constitution and the policies and procedures of Gasóga na hÉireann / Scouting Ireland and registers this membership with Gasóga na hÉireann / Scouting Ireland through the Membership Management System. • The parent(s) and/or guardian(s) of all Youth / Child Member must give their explicit and informed written consent by completing the relevant forms for membership for their child to take up membership of the Scout Group.
Adult	Rover Scout	<ul style="list-style-type: none"> • A Rover Scout is aged between 18 and 25 years plus 364 days old and applies for membership as a Rover Scout through their local Scout Group. • Rover Scout membership is granted by Gasóga na hÉireann / Scouting Ireland on successful completion of the registration, vetting and training requirements associated with that category of membership as defined by Gasóga na hÉireann / Scouting Ireland. • Gasóga na hÉireann / Scouting Ireland approves and registers this membership with Gasóga na hÉireann / Scouting Ireland through the Membership Management System.
Adult	Scouter & Rover Scout / Scouter	<ul style="list-style-type: none"> • Scouter & Rover Scout / Scouter is aged over 18 years old and applies for membership as a Scouter through their local Scout Group. • Scouter & Rover Scout / Scouter membership is granted by Gasóga na hÉireann / Scouting Ireland on successful completion of the registration, vetting and training requirements associated with that category of membership as defined by Gasóga na hÉireann / Scouting Ireland. • Gasóga na hÉireann / Scouting Ireland approves and registers this membership with Gasóga na hÉireann / Scouting Ireland through the Membership Management System.
Adult	Adult Supporter	<ul style="list-style-type: none"> • An Adult Supporter is aged over 18 years old and applies for membership as an Adult Supporter through their local Scout Group. • An Adult Supporter membership is granted by Gasóga na hÉireann / Scouting Ireland on successful completion of the registration, vetting and training requirements associated with that category of membership as defined by Gasóga na hÉireann / Scouting Ireland. • Gasóga na hÉireann / Scouting Ireland approves and registers this membership with Gasóga na hÉireann / Scouting Ireland through the Membership Management System.

Continuing Membership

Type	Category	Requirements to Continue Membership
Youth / Child	Youth / Child Member	<ul style="list-style-type: none"> The Youth / Child member is included in the annual Group Registration. The appropriate registration fee is paid to Gasóga na hÉireann / Scouting Ireland through the Scout Group in accordance with Gasóga na hÉireann / Scouting Ireland policies and procedures. The Youth / Child Member complies with the policies and procedures of Gasóga na hÉireann / Scouting Ireland. The Youth / Child member promotes the ideals of the Youth / Child Charter.
Adult	Rover Scout	<ul style="list-style-type: none"> The Rover Scout is included in the annual Group Registration. The appropriate registration fee is paid to Gasóga na hÉireann / Scouting Ireland through the Scout Group in accordance with Gasóga na hÉireann / Scouting Ireland policies and procedures. The Rover Scout complies with the policies and procedures of Gasóga na hÉireann / Scouting Ireland. The Rover Scout provides educational, training, cultural, recreational, leisure, social or physical activities to children. The Rover Scout promotes the ideals of the Youth / Child Charter. The Rover Scout undertakes ongoing appropriate safeguarding training in accordance with Gasóga na hÉireann / Scouting Ireland policies and procedures. The Rover Scout undertakes a commitment to further advancing their training within Gasóga na hÉireann / Scouting Ireland in accordance with Gasóga na hÉireann / Scouting Ireland policies and procedures.
Adult	Scouter & Rover Scout / Scouter	<ul style="list-style-type: none"> Scouter & Rover Scout / Scouter is included in the annual Group Registration. The appropriate registration fee is paid to Gasóga na hÉireann / Scouting Ireland through the Scout Group in accordance with Gasóga na hÉireann / Scouting Ireland policies and procedures. Scouter & Rover Scout / Scouter continues to uphold their Scout Promise. Scouter & Rover Scout / Scouter is undergoing or has completed their probationary period. Scouter & Rover Scout / Scouter complies with the policies and procedures of Gasóga na hÉireann / Scouting Ireland. Scouter & Rover Scout / Scouter undertakes re-vetting in accordance with Gasóga na hÉireann / Scouting Ireland policies & procedures and legislative requirements. Scouter & Rover Scout / Scouter undertakes ongoing appropriate safeguarding training in line with Gasóga na hÉireann / Scouting Ireland policies and procedures. Scouter & Rover Scout / Scouter has completed/is in the process of completing the necessary training for their appointment in accordance with Gasóga na hÉireann / Scouting Ireland policies & procedures. Scouter & Rover Scout / Scouter undertakes a commitment to further advancing their training within Gasóga na hÉireann / Scouting Ireland in accordance with Gasóga na hÉireann / Scouting Ireland policies and procedures.

Adult	Adult Supporter	<ul style="list-style-type: none"> • The Adult Supporter is included in the annual Group Registration. • The appropriate registration fee is paid to Gasóga na hÉireann / Scouting Ireland through the Scout Group in accordance with Gasóga na hÉireann / Scouting Ireland policies and procedures. • The Adult Supporter complies with the policies and procedures of Gasóga na hÉireann / Scouting Ireland. • The Adult Supporter undertakes ongoing appropriate safeguarding training in accordance with Gasóga na hÉireann / Scouting Ireland policies and procedures. • The Adult Supporter undertakes a commitment to further advancing their training within Gasóga na hÉireann / Scouting Ireland in accordance with Gasóga na hÉireann / Scouting Ireland policies and procedures.
-------	--------------------	---

Ending Membership

Type	Category	Methods to End Membership
Youth / Child	Youth / Child Member	<ul style="list-style-type: none"> • Failure to meet the requirements to Continue Membership. • Resignation – notified to the Group Leader. • Termination of membership – Decision made in accordance with local group policy –Turns 18 years of age and fails to apply for membership as a Scouter / Rover Scout. • Safeguarding Policy of Gasóga na hÉireann / Scouting Ireland not adhered to.
Adult	Rover Scout	<ul style="list-style-type: none"> • Failure to meet the requirements to Continue Membership. • Resignation – notified to the Group Leader. • Termination of membership – Decision made in accordance with local Scout Group policy –Turns 26 years of age and fails to apply for membership as a Scouter. • Termination of membership – Decision made in accordance with the Grievance & Disputes policy CCD-01 & CCD-04. • Safeguarding Policy of Gasóga na hÉireann / Scouting Ireland not adhered to.
Adult	Scouter & Rover Scout / Scouter	<ul style="list-style-type: none"> • Failure to meet the requirements to Continue Membership. • Resignation – notified to the Group Leader. • Termination of membership – Decision made in accordance with the Grievance & Disputes policy CCD-01 & CCD-04. • Termination of membership is ratified and directed by the Board in accordance with the Grievance & Disputes policy CCD-01 & CCD-04. • Safeguarding Policy of Gasóga na hÉireann / Scouting Ireland not adhered to.
Adult	Adult Supporter	<ul style="list-style-type: none"> • Failure to meet the requirements to Continue Membership. • Resignation – notified to the Group Leader. • Termination of membership – Decision made in accordance with the Grievance & Disputes policy CCD-01 & CCD-04. • Termination of membership is ratified and directed by the Board in accordance with the Grievance & Disputes policy CCD-01 & CCD-04. • Safeguarding Policy of Gasóga na hÉireann / Scouting Ireland not adhered to.